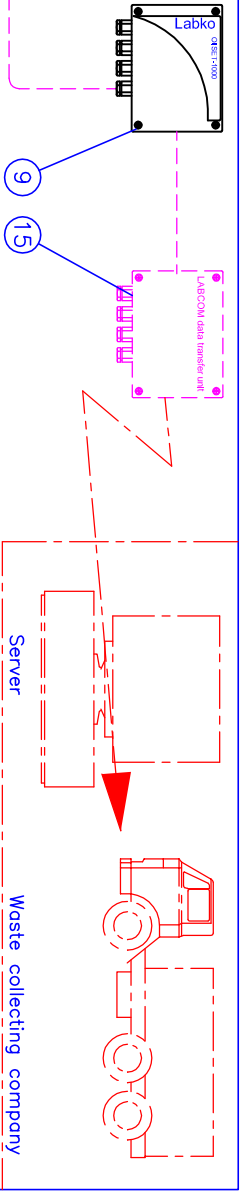
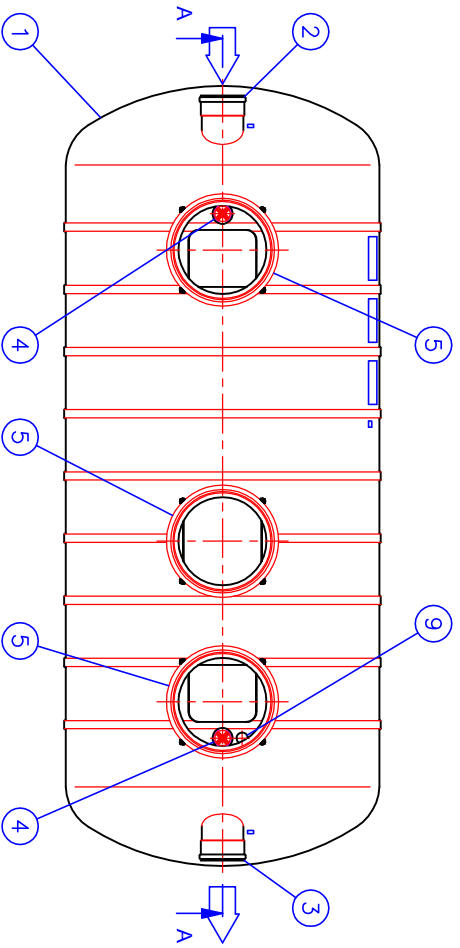


h = Separator connection height from ground (mm)  
 h = \_\_\_\_\_ mm (Max. 2500 mm)



Max. Flow: 100 l/s  
 Weight: 3300 kg (without maintenance shaft)

15	ACCESSORY: Labcom Data Transfer Unit. (x) <input type="checkbox"/>			
14	ACCESSORY: Floating adjustable cover Ø600 (2 pcs.), Standard EN124			
	Cover class A15 (1.5 tn) (x) <input type="checkbox"/>			
	Cover class G250 (25 tn) <input type="checkbox"/>			
	Cover class D400 (40 tn) <input type="checkbox"/>			
	Frame <input type="checkbox"/>			
13	ACCESSORY: Floating adjustable cover Ø800 (1 pc.), Standard EN124			
	Cover class D400 (40 tn) (x) <input type="checkbox"/>			
12	Oil storage volume		2 000 l	
11	Effective volume		42 000 l	
10	Ventilation outlet		PE-MD D110	3
9	OilSET-1000 oil alarm unit with SET DM/3 probe			1
8	EuroHUK 600 maintenance shaft (as needed), PE-MD plastic (2 pcs.)			
	h = Separator connection height from ground (Max. 2500 mm)			
	EuroHUK 600 h 9-13 (x) <input type="checkbox"/>	PE-MD	h = 900...1300 mm	(22 kg)
	EuroHUK 600 h13-17 <input type="checkbox"/>	PE-MD	h = 1300...1700 mm	(38 kg)
	EuroHUK 600 h17-21 <input type="checkbox"/>	PE-MD	h = 1700...2100 mm	(56 kg)
	EuroHUK 600 h21-25 <input type="checkbox"/>	PE-MD	h = 2100...2500 mm	(80 kg)
7	EuroHUK 800 maintenance shaft (as needed), PE-MD plastic (1 pc.)			
	h = Separator connection height from ground (Max. 2500 mm)			
	EuroHUK 800 h 9-13 (x) <input type="checkbox"/>	PE-MD	h = 900...1300 mm	(25 kg)
	EuroHUK 800 h13-17 <input type="checkbox"/>	PE-MD	h = 1300...1700 mm	(42 kg)
	EuroHUK 800 h17-21 <input type="checkbox"/>	PE-MD	h = 1700...2100 mm	(60 kg)
	EuroHUK 800 h21-25 <input type="checkbox"/>	PE-MD	h = 2100...2500 mm	(84 kg)
6	Cooleracer		pp	15
5	Maintenance shaft installation sleeve		GRP D1000/1100 mm	3
4	Oil suction pipe		PVC D160	2
3	Outlet sewer		PVC D400	1
2	Inlet sewer		PVC D400	1
1	Material: Glass Reinforced Plastic "Lasa Composit", Ø3000, L=7500 mm pH 3-10/Heat resistance 50°C			1

This drawing and the technical information included in the drawing are property of Wavin-Labko. All the national regulations concerning this product have to be checked before purchase of the product. Installation have to be done according to installation manual.

Approved by customer: \_\_\_\_\_ / \_\_\_\_\_ 200. \_\_\_\_\_

Product: \_\_\_\_\_ Title: \_\_\_\_\_

Design by: \_\_\_\_\_ Checked by: \_\_\_\_\_ Approved by: \_\_\_\_\_

TP/JS \_\_\_\_\_ JP 29.01.09

Drawing no. 24QB03de Date: 29.01.09 Scale: \_\_\_\_\_

Construction site: \_\_\_\_\_

Product: EuroPEK NS100 Oil separator, Class I (EN858) Drawing type CUSTOMER DRAWING

WAVIN Labko  
 FIN-35240 KANGASALA  
 FINLAND  
 Tel. +358-(0)20-1285 200  
 Fax +358-(0)20-1285 280  
 www.wavin-labko.fi

29.1.2009 9:34:20