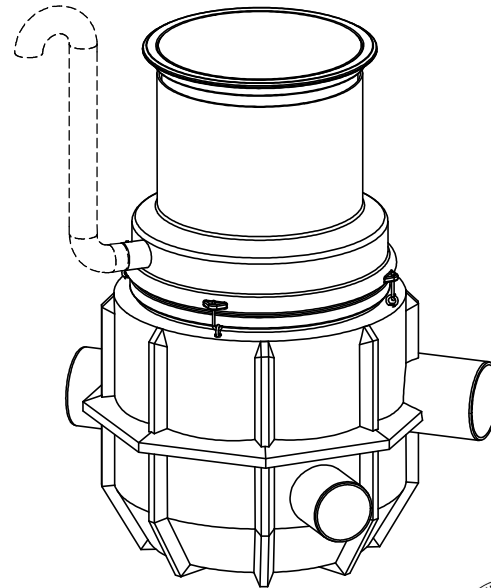
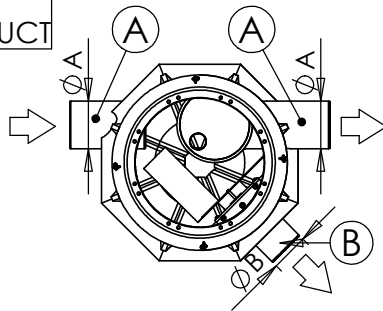


1	LABKO FRW PE		6/18	10/30	15/45	20/60	30/90
	Nominal flow rate	l/s	6	10	15	20	30
	Max flow rate	l/s	18	30	45	60	90
A	Inlet and by pass pipe	Dy	200	200	250	250	315
B	Outlet pipe	Dy	160	160	200	250	250
C	Flow regulator	pcs	1	1	1	1	1
D	EuroHUK 800 maintenance shaft (as needed)	pcs	1	1	1	1	1
E	Cast iron cover D400 40tn [ ] (accessory)	pcs	1	1	1	1	1
F	Ventilation pipe D110	pcs	110	110	110	110	110
$h_{min}$	Min connection height	mm	1300	1300	1300	1300	1300
$h_{max}$	Max connection height	mm	2900	2900	2900	2900	2900

RIGHT HAND SIDE  
STANDARD PRODUCT



Selection of maintenance shaft EuroHUK 800 for FRW NS10/30-NS30/90				
EuroHUK 800 maintenance shaft model	9-13 [ ]	13-17 [ ]	17-21 [ ]	21-25 [ ]
Installation depth of the inlet sewer from ground surface	1300-1700	1700-2100	2100-2500	2500-2900

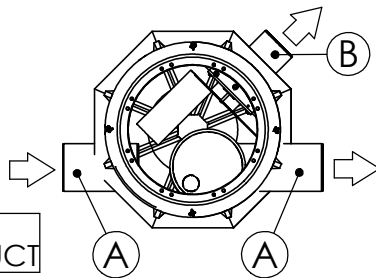
Right hand side standard product

Left hand side product, special order [ ]

$h$  = Separator connection height from ground (mm)

$h$  = \_\_\_\_\_ mm

LEFT HAND SIDE  
SPECIAL PRODUCT



This drawing and the technical information included in the drawing are property of Wavin-Labko Ltd. Authorities' regulations must be known before providing the product. Products must be installed according to installation instructions.



Product: <b>LABKO FRW NS6/18-NS30/90</b>			Drawing type: <b>Customer drawing</b>	
Design by: <b>TP/JS</b>	Approved by: <b>HT 14.01.2010</b>	Drawing no: <b>42AB12ae</b>	Date: <b>14.01.2010</b>	Scale (A4): <b>1:30</b>
			Construction site:	
WAVIN-LABKO Ltd. Labkotie 1 FIN-36240 KANGASALA FINLAND puh. +358 020 1285 200 fax. +358 0201285 280				