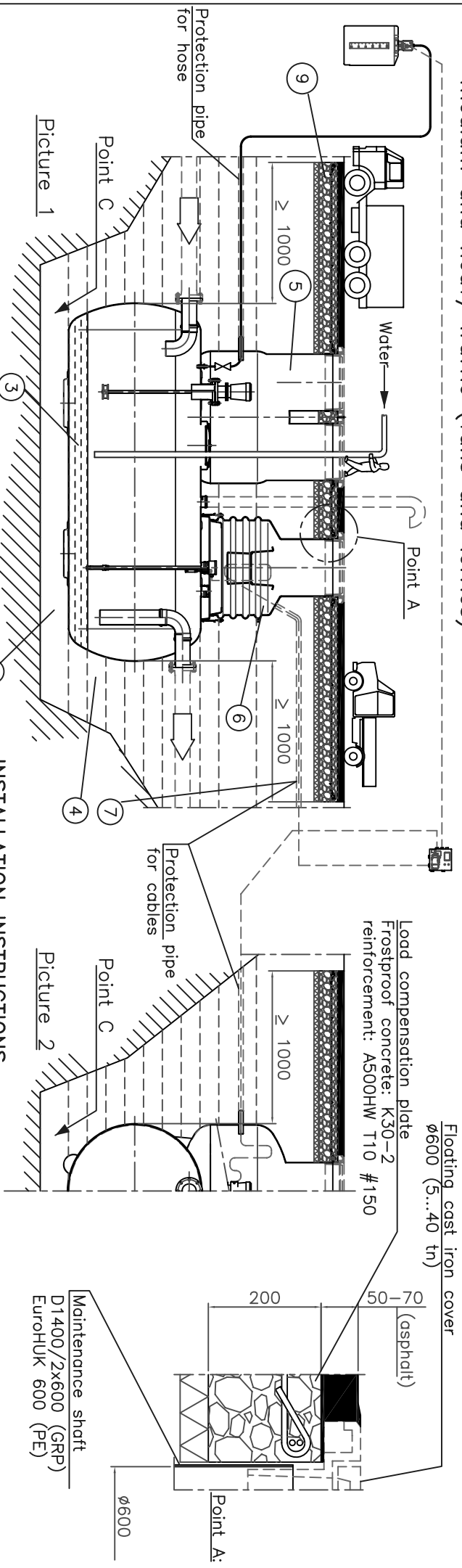


### Installation instructions

- pedestrian and light traffic (passenger cars)
- medium and heavy traffic (vans and lorries)

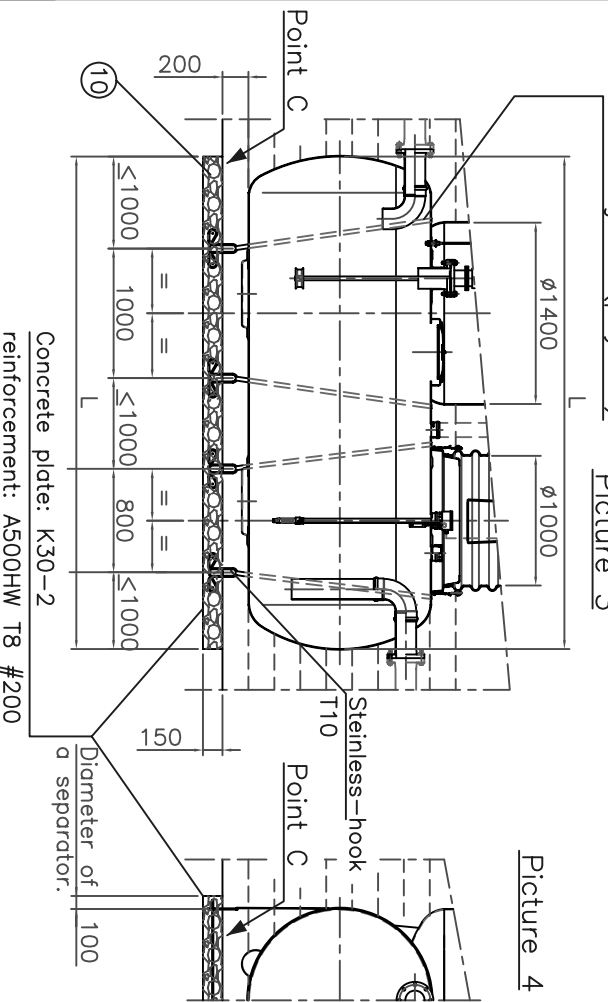


Anchoring of the separator in the ground water area and/or where the bearing capacity of the ground is poor.

Anchoring belt (polyester)

Picture 3

Picture 4



### INSTALLATION INSTRUCTIONS

1. Compact about 30 cm thick, horizontally levelled stone free sand layer on the bottom of the pit.
2. Lift the tank carefully into pit by crane and lifting belts.
3. Add about 20 cm of water inside the tank to make it stable.
4. Carefully compact the sand around the tank. Continue compacting the sand in 20 cm layers to the level of the connection pipes. Install the pipes to the connections of the tank. Add some water to the tank as filling the pit with sand to keep the tank steady.
5. LM-HUK 1400 –maintenance shaft should be laminated on the collar (Pict. 1 and 2).
6. Remove the storage shield from the EuroHUK 600 maintenance shaft's opening. Place the rubber gasket in the lower edge of the maintenance shaft. Place the maintenance shaft vertically on the mounting collar of the tank and lock it.
7. Lead the cables and chemical pipe from the tank into the building inside the protection pipe.
8. Continue compacting the sand in 40 cm layers up to the ground surface.
9. On a vehicle area there should be cast a load compensation plate above the separator as seen in pictures 1 and 2 and place A.
10. Against the lifting forces of the ground water, the separator should be anchored as indicated in picture 3 and 4. Compact atleast 20 cm thick stone free sand layer between the plate and the separator.

This drawing and the technical information included in the drawing are property of Wavin-Labko. All the national regulations concerning this product have to be checked before purchase of the product. Installation have to be done according to installation manual.

Approved by customer:

200



Product:	Title:	Drawing no.		Drawing type
Design by:	LABKO NEUTRA 2000...20000 (continuous flow)	70LF01_E		INSTALLATION PICTURE
T/S/JS	Checked by:	Approved by:	Date:	Scale:
	TU	TU	02.10.03	

**WAVIN**  
Labko 1  
FIN-36240  
FINLAND  
Tel. +358-020-1285 200  
Fax +358-020-1285 280

**Labko**  
WAVIN-LABKO  
KANGASALA

Construction site:  
UNDERGROUND INSTALLATION