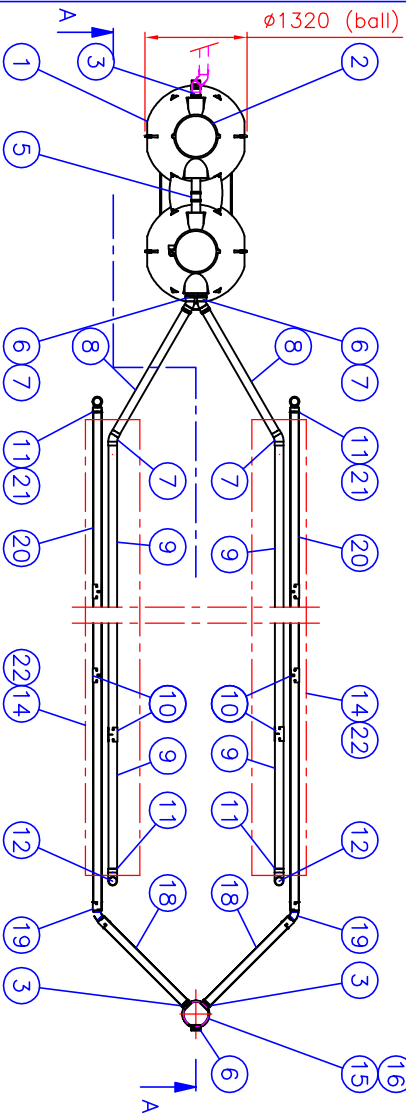


Det. A – A:

Det. B – B:



22	Filter cloth	0.7 x 15.0 m	2
21	Ventilation pipe	D110, L=2000 mm	4
20	Drainage pipe	D110, L=3000 mm	10
19	Flexible connector (incl. 2pcs gaskets)	D110	2
18	Sewer pipe	D110, L=2000 mm	2
17	Cover part	PE D315	1
16	Bottom part with gasket	PP D315	1
15	Collector well D315 with collector lines (2 pcs), material: PVC (L=max. 3000)		1
14	Filter cloth	0.7 x 16.0 m	2
13	End cap for ventilation	D110	4
12	Ventilation pipe	D110, L=1900 mm	2
11	Bend	D110-90°	4
10	Connector	D110	24
9	Infiltration pipe	D110, L=1780 mm	16
8	Distribution pipe	D110, L=1900 mm	2
7	Bend	D110-30°	4
6	Outlet sewer	D110	3
5	Ventilation pipe	PEH D110	1
4	Connector	D110	1
3	Inlet sewer	PP D110	3
2	Maintenance shaft with Cover	PE Ø520 mm	2
1	Sako-3 Twin septic tank, material: PE-MD (Total volume: 2000 l)		1
	Sedimentation chamber I, volume 1000 l		
	Sedimentation chamber II, volume 500 l		
	Sedimentation chamber III, volume 500 l		

Product: Title: Sako-3 Twin Distribution system

Design by: Checked by: Approved by: Drawing no. Date: Scale: TP/JS JP 12.03.09 57EG33_e 12.03.09 CUSTOMER DRAWING

This drawing and the technical information included in the drawing are property of Wavin-Labko. All the national regulations concerning this product have to be checked before purchase of the product. Installation have to be done according to installation manual.

Approved by customer: / . 200 .



WAVIN
Labko
FIN-35240 KANGASALA
FINLAND
Tel. +358-(0)20-1285 200
Fax +358-(0)20-1285 280
www.wavin-labko.fi

Construction site: