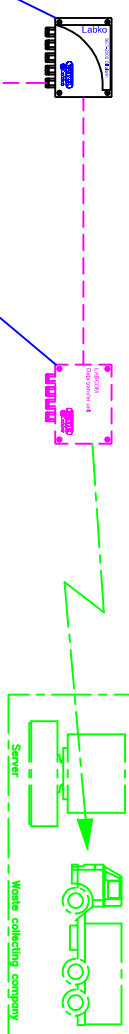


h = Installation depth of separator from ground surface (mm)
 h = _____ mm (max. 2500 mm)

| | | | | | | | |
|---|--|-----|--------------------------|--------------------------|--------------------------|--------------------------|--------------------------|
| 1 | EuroPEK FILTER Oil separator | NS | 65 | 80 | 100 | 125 | 150 |
| | Maximum flow rate | l/s | 65 | 80 | 100 | 125 | 150 |
| A | Inlet/outlet sewer | Dy | 400 | 400 | 400 | 400 | 400 |
| F | Length | mm | 5900 | 7000 | 8700 | 11400 | 13000 |
| G | Effective capacity | l | 19200 | 22400 | 28000 | 37100 | 42500 |
| H | Oil storage capacity | l | 1400 | 1600 | 2100 | 3070 | 3520 |
| J | Codescator 3-D filter | pcs | 4 | 4 | 4 | 4 | 4 |
| L | SET-2000 oil alarm unit with SET DM/3 and SET/OS2 probes | pcs | 1 | 1 | 1 | 1 | 1 |
| M | Oil skimming pipe | pcs | 1 | 1 | 1 | 1 | 1 |
| | Weight | kg | 1750 | 2100 | 2400 | 3000 | 3450 |
| | Chosen oil separator | (x) | <input type="checkbox"/> | <input type="checkbox"/> | <input type="checkbox"/> | <input type="checkbox"/> | <input type="checkbox"/> |



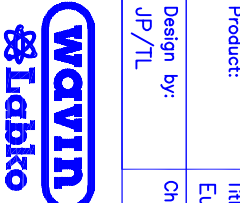
| | | | | | | | |
|---|--|--------------------------|--------------------|-------------------|--|--|---|
| 2 | PP-HUK 600 maintenance shaft (as needed), material: PP plastic h = Installation depth of separator from ground surface (mm) | | | | | | 3 |
| | PP-HUK 600 h 9-13 (x) | <input type="checkbox"/> | h = 900...1300 mm | | | | |
| | PP-HUK 600 h13-17 | <input type="checkbox"/> | h = 1300...1700 mm | | | | |
| | PP-HUK 600 h17-21 | <input type="checkbox"/> | h = 1700...2100 mm | | | | |
| | PP-HUK 600 h21-25 | <input type="checkbox"/> | h = 2100...2500 mm | | | | |
| 3 | EuroHUK 600 maintenance shaft (as needed), material: PE-MD h = Installation depth of separator from ground surface (mm) | | | | | | 1 |
| | EuroHUK 600 h 9-13 (x) | <input type="checkbox"/> | h = 900...1300 mm | Part no. 3632 632 | | | |
| | EuroHUK 600 h13-17 | <input type="checkbox"/> | h = 1300...1700 mm | Part no. 3632 634 | | | |
| | EuroHUK 600 h17-21 | <input type="checkbox"/> | h = 1700...2100 mm | Part no. 3632 636 | | | |
| | EuroHUK 600 h21-25 | <input type="checkbox"/> | h = 2100...2500 mm | Part no. 3632 638 | | | |
| 4 | ACCESSORY: Labcom Data Transfer Unit (x) | <input type="checkbox"/> | | | | | |
| 5 | ACCESSORY: Floating adjustable cover Ø600 (4 pcs) | | | | | | |
| | Cover A15 (1.5 tn) (x) | <input type="checkbox"/> | | Part no. 3322 050 | | | |
| | Cover C250 (25 tn) | <input type="checkbox"/> | | Part no. 3322 054 | | | |
| | Cover D400 (40 tn) | <input type="checkbox"/> | | Part no. 3322 056 | | | |
| | Frame | <input type="checkbox"/> | | Part no. 3325 010 | | | |
| T | Ventilation outlet | | PE | D110 | | | 4 |

| | | | | | |
|--------------------|-------------|--|-------------|--------------|------------------|
| Product: | Title: | EuroPEK FILTER NS65..150 Oil separator (EN858) | | Drawing type | CUSTOMER DRAWING |
| Design by: | Checked by: | Approved by: | Drawing no. | Date: | Scale: |
| JP/TL | JP | JP | 24LB02de | 04.09.07 | |
| Construction site: | | | | | |

This drawing and the technical information included in the drawing are property of Wavin-Labko Ltd. This drawing can not be shown to a third party without the consent of Wavin-Labko Ltd.

Approved by customer:

/ . 200 .



WAVIN-LABKO Ltd.
 Labkote 1
 FIN-36240 KANGASALA
 FINLAND
 Tel. +358-020-1285 200
 Fax +358-020-1285 280

Construction site: