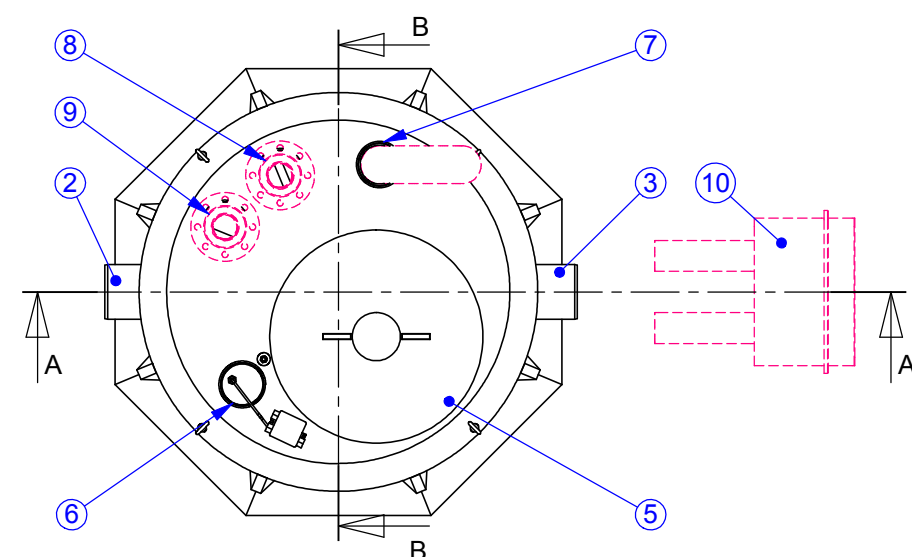


CE
 09
 EN 858-1

Fulfilled requirements of flow rate test according to standard EN858 (LGA)

Safety in case of fire: E
 VTT test report VTT-S-7683-06

EuroPEK Roo NS3 SL - NS10 SL indoor installation oil separators



		NS	3	6	10
Oil separator, class-I (EN858)					
Nominal flow rate		l/s	3	6	10
1	Body, PE-MD, pH3-10, heat resistance 50°				
	H1 Inlet sewer/bottom	mm	770	770	1170
	H2 Outlet sewer/bottom	mm	700	700	1100
	H3 Total height	mm	1150	1150	1550
	V Effective volume	l	600	600	1000
	Vo Oil storage volume (height. 150 mm)	l	150	150	150
2	Inlet sewer	PE-HD	D110	D160	D160
3	Outlet sewer	PE-HD	D110	D160	D160
4	Coalescer	pcs	2	2	2
	H (mm)	mm	700	700	1000
5	Cover D620/545 mm	pc	1	1	1
6	OilSET-1000 Oil alarm unit	pc	1	1	1
6a	SET/DM3 -probe	pc	1	1	1
7	Ventilation outlet D110	pc	1	1	1
8	ACCESSORY: Oil suction pipe with flange DN80	(x)	[]	[]	[]
9	ACCESSORY: Emptying outlet with flange DN80	(x)	[]	[]	[]
10	ACCESSORY: Tuplaimubox fast coupling box	(x)	[]	[]	[]
11	ACCESSORY: LABCOM data transfer unit	(x)	[]	[]	[]
CHOSEN SEPARATOR		(x)	[]	[]	[]

This drawing and the technical information included in the drawing are property of Wavin-Labko Ltd. Authorities' regulations must be known before providing the product. Products must be installed according to installation instructions.

Product: **EuroPEK Roo NS3 - NS10 SL Oil separator** Drawing type: **CUSTOMER DRAWING**

Design by: TP/TL Approved by: JP 08.02.2010 Drawing no: 29AB09_e Date: 08.02.2010 Scale (A4): 1:22

WAVIN-LABKO Ltd.
 Labkotie 1
 FIN-36240 KANGASALA
 FINLAND
 puh. +358 020 1285 200
 fax. +358 0201285 280

Construction site: