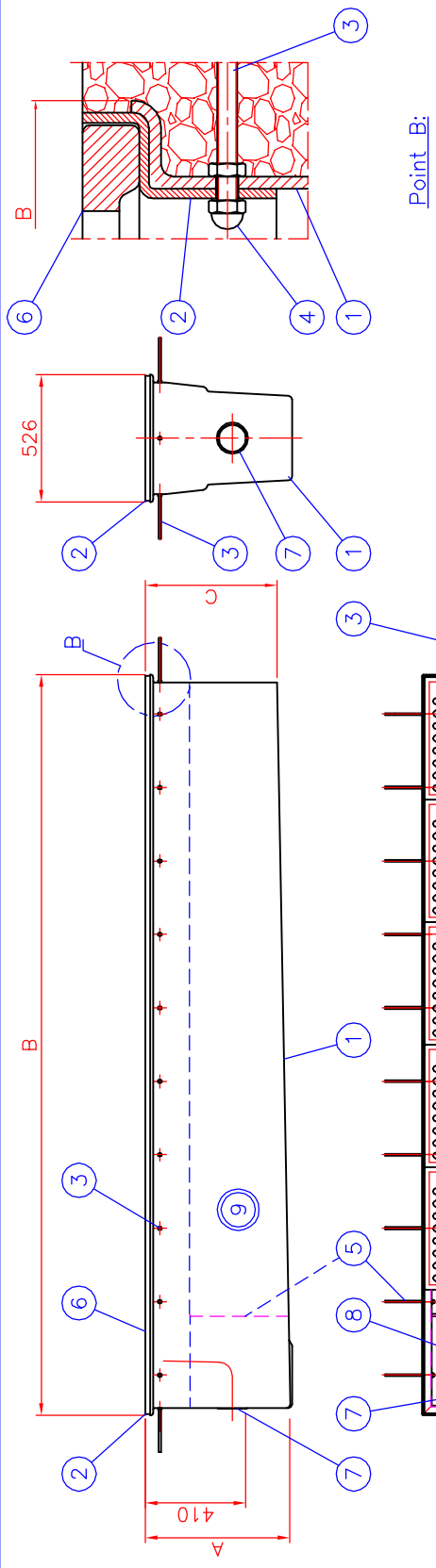
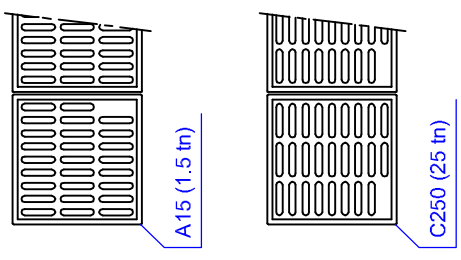


Note! The rain water covers should be paced as shown in the drawing.



NOTE! If you make any changes on the drawing, mark (x) in the square. Changes made on the drawing:

Note!  
It is advisable to keep the covers in place while laying the concrete.

Sand and Sludge separator		HEK	5/20	5/25	5/30	5/35	5/40	5/45	5/50	5/55	5/60	5/65	5/70	5/75	5/80
9	Storage volume of Sand and sludge	l	240	310	380	450	520	590	660	730	800	850	900	950	1000
8	Sieve (PVC, D110/160)	pc	1	1	1	1	1	1	1	1	1	1	1	1	1
7	Outlet sewer (D110)	pc	1	1	1	1	1	1	1	1	1	1	1	1	1
6	Cover 500x500 mm (Standard delivery A15 - 1.5 tn)	pcs	3	4	5	6	7	8	9	10	11	12	13	14	15
	Grating cover	pc	1	1	1	1	1	1	1	1	1	1	1	1	1
	Solid cover	pc	1	1	1	1	1	1	1	1	1	1	1	1	1
5	Wall	pc	1	1	1	1	1	1	1	1	1	1	1	1	1
4	capped nut (M8)	pcs	12	18	22	24	28	32	34	38	42	44	48	50	54
3	Galvanized starter bars T8	pcs	12	18	22	24	28	32	34	38	42	44	48	50	54
2	Frame	pc	1	1	1	1	1	1	1	1	1	1	1	1	1
1	Material: Glass Reinforced Plastic pH 3-10/Heat resistance 50°C	pc	1	1	1	1	1	1	1	1	1	1	1	1	1
C	Height	mm	560	545	535	530	520	510	500	490	480	470	465	455	450
B	Length	mm	2026	2526	3026	3526	4026	4542	5042	5542	6042	6542	7042	7542	8042
A	Height	mm	560	590	590	590	590	590	590	590	590	590	590	590	590
	Weight with covers (A15 - 1.5 tn)	kg	150	190	230	270	310	350	390	430	470	510	550	590	630
	CHOOSE	(x)	<input type="checkbox"/>	<input type="checkbox"/>	<input type="checkbox"/>	<input type="checkbox"/>	<input type="checkbox"/>	<input type="checkbox"/>	<input type="checkbox"/>	<input type="checkbox"/>	<input type="checkbox"/>	<input type="checkbox"/>	<input type="checkbox"/>	<input type="checkbox"/>	<input type="checkbox"/>

6 Cover 500x500 mm (Standard delivery A15). The Maximum load to the surface of the cover is half of the nominal loading capacity of the cover.  
 Grating cover A15 (1.5tn) (x)  For cars up to 0.75 tn  
 Solid cover  For cars up to 0.75 tn  
 Grating cover C250 (25tn) (x)  For cars up to 12.5 tn  
 Solid cover  For cars up to 12.5 tn

This drawing and the technical information included in the drawing are property of Wavin-Labko. All the national regulations concerning this product have to be checked before purchase of the product. Installation have to be done according to installation manual.

Approved by customer: \_\_\_\_\_ / \_\_\_\_\_ 200\_\_.

Product: HEK 5/20...5/80 Sand and Sludge separator

Design by: JS/JJP

Checked by: TP

Approved by: TP

Title: HEK 5/20...5/80 Sand and Sludge separator

Construction site: WAVIN-LABKO Labkotie 1 FINLAND

Approved by: TP

Approved by: KANGASALA FINLAND

Construction site: WAVIN-LABKO Labkotie 1 FINLAND

Approved by: KANGASALA FINLAND

Approved by: KANGASALA FINLAND

Approved by: KANGASALA FINLAND

Drawing type: CUSTOMER DRAWING

Date: 13.09.07

Scale:

Drawing no. 13AB02ae

Construction site:

13.09.2007 16:10:59; 1:29.1176